

St Helier Vessel Traffic Service (VTS), formerly known as St Helier Port Control, is situated at the pier heads of St Helier harbour and is responsible for the safe movement of all leisure and commercial shipping within its controlled waters.

VTS provides a regulatory service to the Port of Jersey, monitoring and managing commercial vessel movements within the port and surrounding waters. VTS also monitors pleasure craft and their compliance to regulations within the port and surrounding waters, and provides them with guidance and information.

VTS limits

Vessels over 25 metres in length or a vessel engaged in towage must report on entering/leaving the VTS area and at the designated Reporting Points. Vessels other than reporting vessels are not required to report to St Helier VTS except in an emergency or when required by the Harbour Master.

Contacting St Helier VTS

VTS maintains a constant watch on VHF 14 and may be contacted by telephone on +44 (0) 1534 447722.

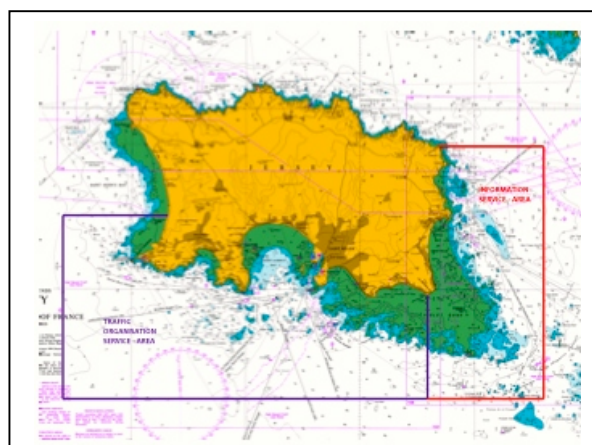
Routine Broadcasts by St Helier VTS

VTS broadcasts routine information at a quarter past the hour, every hour from the time that the first commercial vessel enters the VTS area until the last vessel departs on any given day. In these broadcasts the following information is relayed:

- Commercial Vessel movements
- Speed Restrictions
- Navigational Information
- Wind and Tide Information

By listening to Ch 14 before departing your berth, you will have a better understanding of what is happening in the VTS area and avoid any unnecessary waiting to enter or leave St Helier Harbour.

All Traffic Reports should be logged with Jersey Coastguard on Ch 82 before departing and completed once you have reached your destination.








IALA traffic lights and radio frequencies

The management of traffic within the port is controlled using the IALA traffic control lights located at the Victoria pier heads below the VTS tower.

Traffic through the area has to be strictly controlled to allow for safe movement of commercial and pleasure craft, especially at peak shipping times.

Local and visiting craft are advised to keep a listening watch on VHF channel 14 when approaching St Helier and when manoeuvring within the port. Please note that channel M (VHF marina frequency) is not used in St Helier.

<u>Light signal</u>	<u>Light status</u>	<u>Meaning</u>	<u>Additional information</u>
	Fixed	Stop	Vessels shall not proceed.
	Fixed	Go	Vessels may proceed with caution. 1-way traffic.
	Fixed	Go	Vessels may proceed with caution. 2-way traffic.
	Additional flashing	Exemption	Power driven vessels less than 25 metres may proceed contrary to the main signals. Keep to the starboard side.
	Flashing	Serious emergency	All vessels to stop. Await instructions.

Speed limits

A 5 knot speed limit is in place within the harbour and entrance. It is imperative that all craft adhere to this speed limit at all times. This is monitored by St Helier VTS.